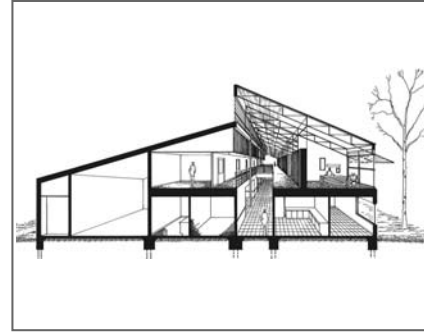


# ELECTRO COAL TRANSFER CORPORATION DAVANT, LA

NEW CONSTRUCTION



**COMPLETED:** 1989

**PROGRAM:** 18,500 SF

**BUDGET:** \$1 MILLION

**CLIENT:** ELECTRO COAL CORP

**MBA TEAM:**

EDWARD C. MATHES, ARCHITECT, AIA

PETER F. PRIOLA, ARCHITECT, AIA

■ This facility houses the offices for the coal storage and handling company within an industrial site located along the Mississippi River. Program requirements included executive offices, field supervisory personnel rooms and a meeting/ training room for use by all employees. The architects developed an axial plan using repetitive structural bays and locating entrances on both ends of the central axis. The elongated "parti" maximized the views from the building of the adjacent river and port facilities. In efforts to enhance the quality of the workspace and to precede a sense of unity among the building's diverse users, a two-story naturally illuminated circulation spine was created. All offices and workspaces within the building open directly off of the central axis.