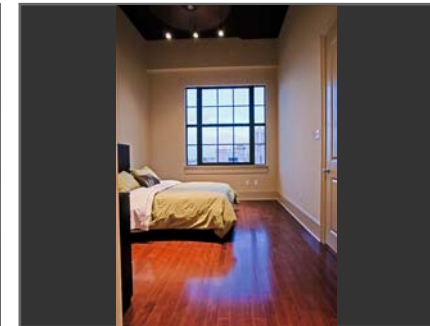


1201 CANAL CONDOMINIUMS | NEW ORLEANS, LA

100% RESTORATION & RENOVATION



COMPLETED: 2008
PROGRAM: +350,000 SF
BUDGET: \$36.5 MILLION
CLIENT: KFK GROUP
MBA TEAM: CREED W. BRIERRE, FAIA
LAWRENCE ADAMS, AIA
GEOFFREY HARTNETT, AIA
RAVENEL RIGGS, AIA, TIM LUPIN
ROSIE ADAMS

■ For 94 years, the Krauss Department Store grew to be one of the largest retail establishments in New Orleans. Two 6-story buildings with bridges at every level were converted to condominiums including several penthouse units with private terraces overlooking the Central Business District and the French Quarter. Major structural modifications were made to the building to introduce 5-story light-wells in the center and the addition of a mezzanine parking level. The conversion design includes a formal drive-through leading directly to the large lobby and a multi-level rooftop swimming pool/terrace with spectacular city views.